

Ali Zuckowski



Rise Like a Phoenix

אקום כמו עוף-החול

אלי צוקובסקי

5

The first staff of music begins with a treble clef, a key signature of one flat (B-flat), and a common time signature (C). It features a repeat sign, a fermata, and a series of eighth and sixteenth notes.

[illegible]

14

16

Musical notation for measures 16 and 17. Measure 16 contains a half note G4, a quarter note A4, a quarter note B4, a quarter note C5, a half note B4, and a half note A4. Measure 17 contains a half note G4, a quarter note F4, a quarter note E4, a quarter note D4, a half note C4, and a half note B3. The key signature has one flat (Bb).

18

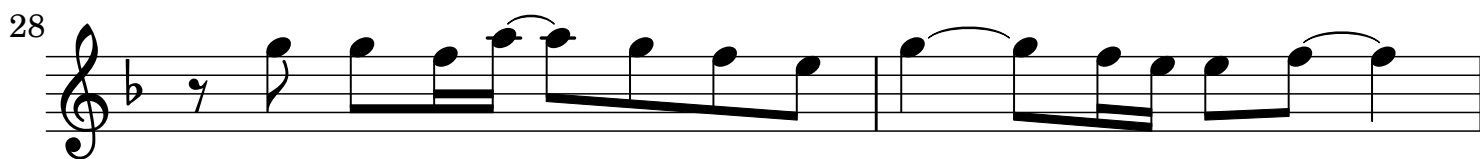
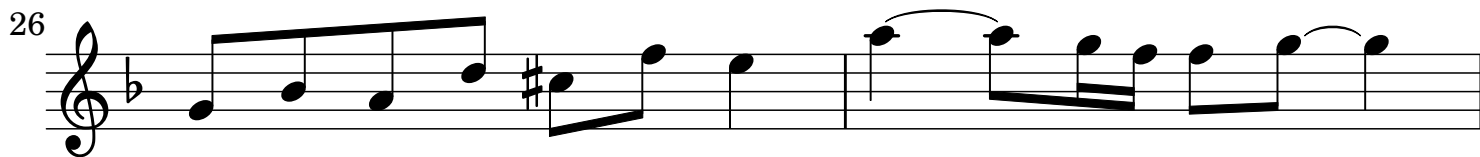
Musical notation for exercise 18, featuring a treble clef, a key signature of one flat (B-flat), and a melody with eighth and quarter notes, including triplet markings.

21

21

24 D.S. al Fine

24 D.S. al Fine



Fine